

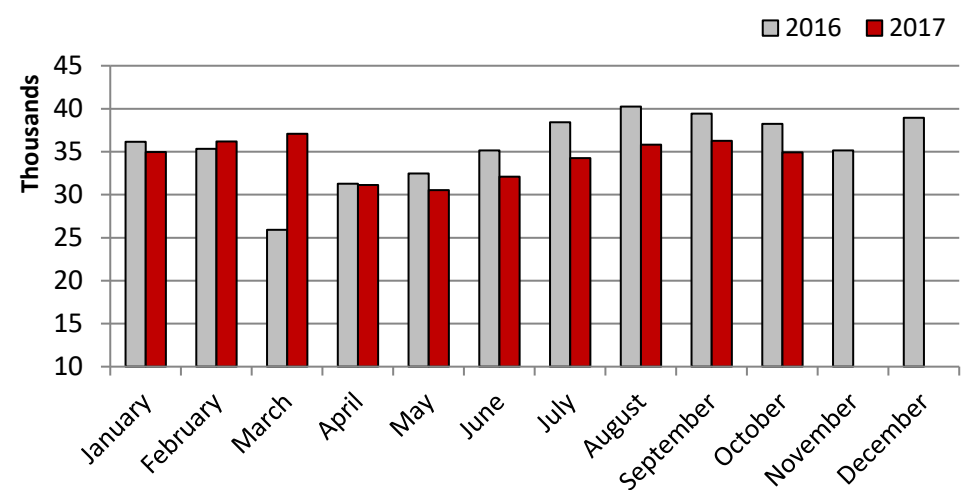
# Malta Gaming Authority

## Casino Players' Visits

Last updated: 16<sup>th</sup> November 2017

### 1. Casino Players' Visits - Maltese

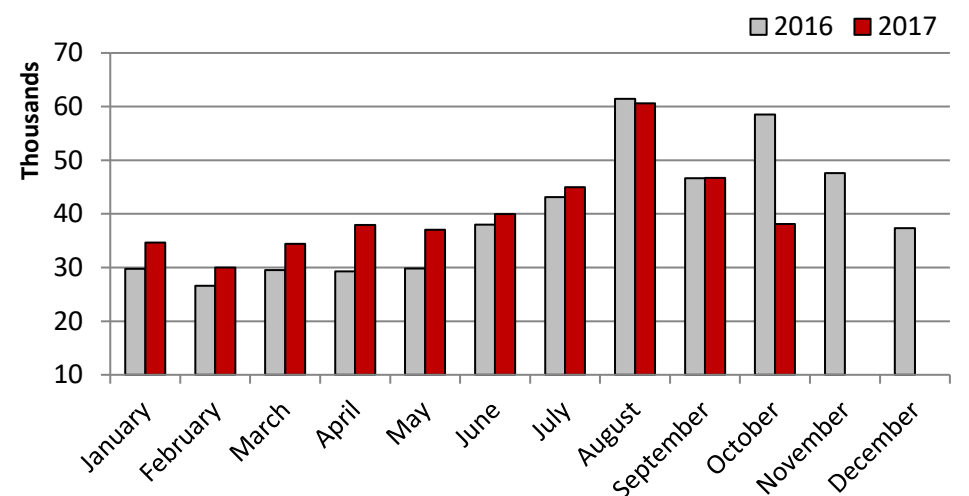
Maltese	2015	2016	2017	% change (2016 vs. 2017)
January	31,269	36,173	34,962	-3%
February	29,117	35,338	36,188	2%
March	32,719	25,906	37,103	43%
April	29,393	31,275	31,118	-1%
May	32,546	32,469	30,543	-6%
June	30,314	35,164	32,112	-9%
July	30,117	38,410	34,255	-11%
August	32,862	40,246	35,808	-11%
September	32,676	39,424	36,281	-8%
October	32,829	38,257	34,924	-9%
November	30,688	35,145		
December	37,078	38,949		
<b>Total</b>	<b>381,608</b>	<b>426,756</b>		



Graph 1: Casino Players' Visits - Maltese (2016 vs. 2017)

### 2. Casino Players' Visits - Non-Maltese

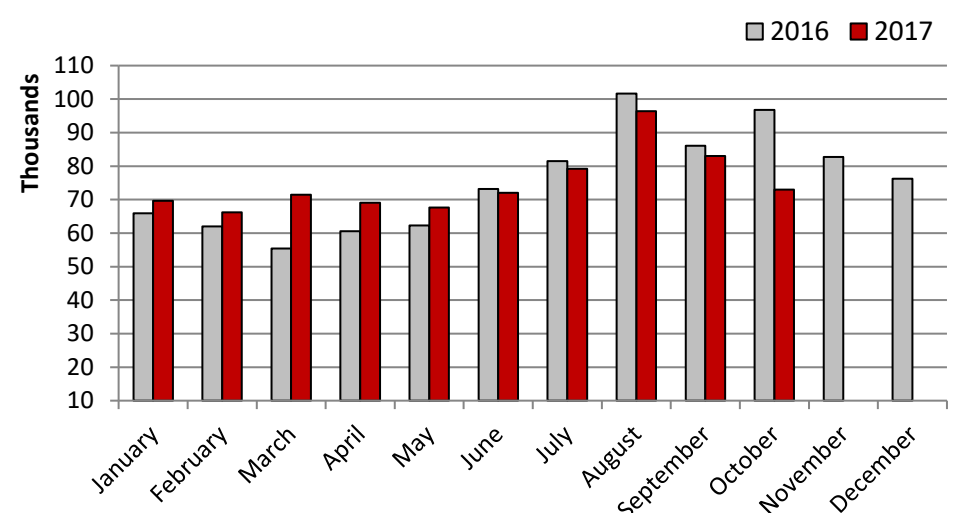
Non-Maltese	2015	2016	2017	% change (2016 vs. 2017)
January	22,565	29,773	34,657	16%
February	23,042	26,619	29,990	13%
March	43,764	29,544	34,392	16%
April	27,735	29,262	37,926	30%
May	32,118	29,809	37,061	24%
June	29,470	38,012	39,942	5%
July	32,431	43,105	44,983	4%
August	46,061	61,448	60,621	-1%
September	33,546	46,655	46,716	0%
October	46,455	58,512	38,092	-35%
November	37,421	47,594		
December	24,842	37,323		
<b>Total</b>	<b>399,450</b>	<b>477,656</b>		



Graph 2: Casino Players' Visits - Non-Maltese (2016 vs. 2017)

### 3. Casino Players' Visits - Total: Maltese & Non-Maltese

Total	2015	2016	2017	% change (2016 vs. 2017)
January	53,834	65,946	69,619	6%
February	52,159	61,957	66,178	7%
March	76,483	55,450	71,495	29%
April	57,128	60,537	69,044	14%
May	64,664	62,278	67,604	9%
June	59,784	73,176	72,054	-2%
July	62,548	81,515	79,238	-3%
August	78,923	101,694	96,429	-5%
September	66,222	86,079	82,997	-4%
October	79,284	96,769	73,016	-25%
November	68,109	82,739		
December	61,920	76,272		
<b>Total</b>	<b>781,058</b>	<b>904,412</b>		



Graph 3: Casino Players' Visits - Total Maltese & Non-Maltese (2016 vs. 2017)

#### Notes:

Data in this publication represents the number of separate visits, rather than the number of unique customers.